

The aims of planning

- to organise land use and building to create the basis for high quality living environments,
- to promote ecologically, economically, socially and culturally sustainable developments,
- to ensure that everyone has the chance to participate in open planning processes,
- to guarantee the quality of openly publicised planning decisions and participatory processes, and to ensure that a wide range of planning expertise is available.

Tools of managing urban structure

- **Architectural policy program**
- **Review of land owning policies**
- **Social impacts assessment**
- **Regional housing survey**
- **Land use implementation program**
- **Co-operation / joint-projects**

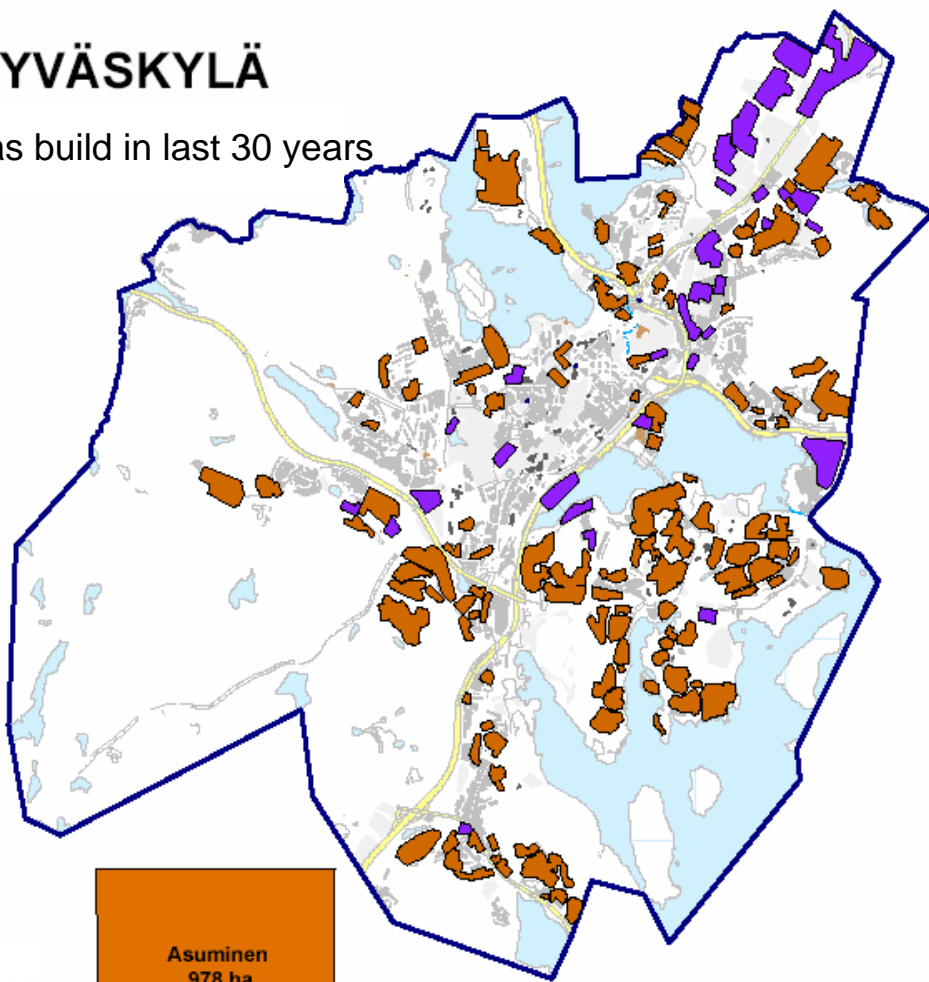
Land Use Implementation Program

Aims :

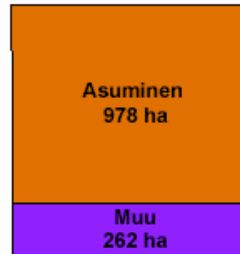
- adequate number of building sites housing /year
- sites are spread evenly around the city, therefore contributing to heterogenic housing production
- Enhancing areal identities
- Securing social balance
- Predicting investments in infrastructure
- Securing adequate local services, like schools, health centers etc.

JYVÄSKYLÄ

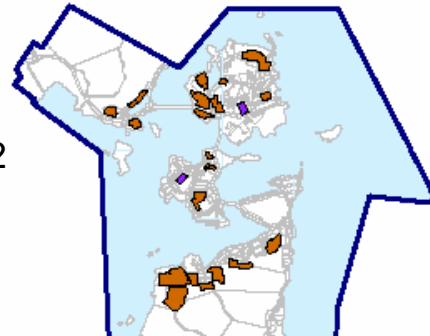
Areas build in last 30 years



Totally 1 240 ha build areas



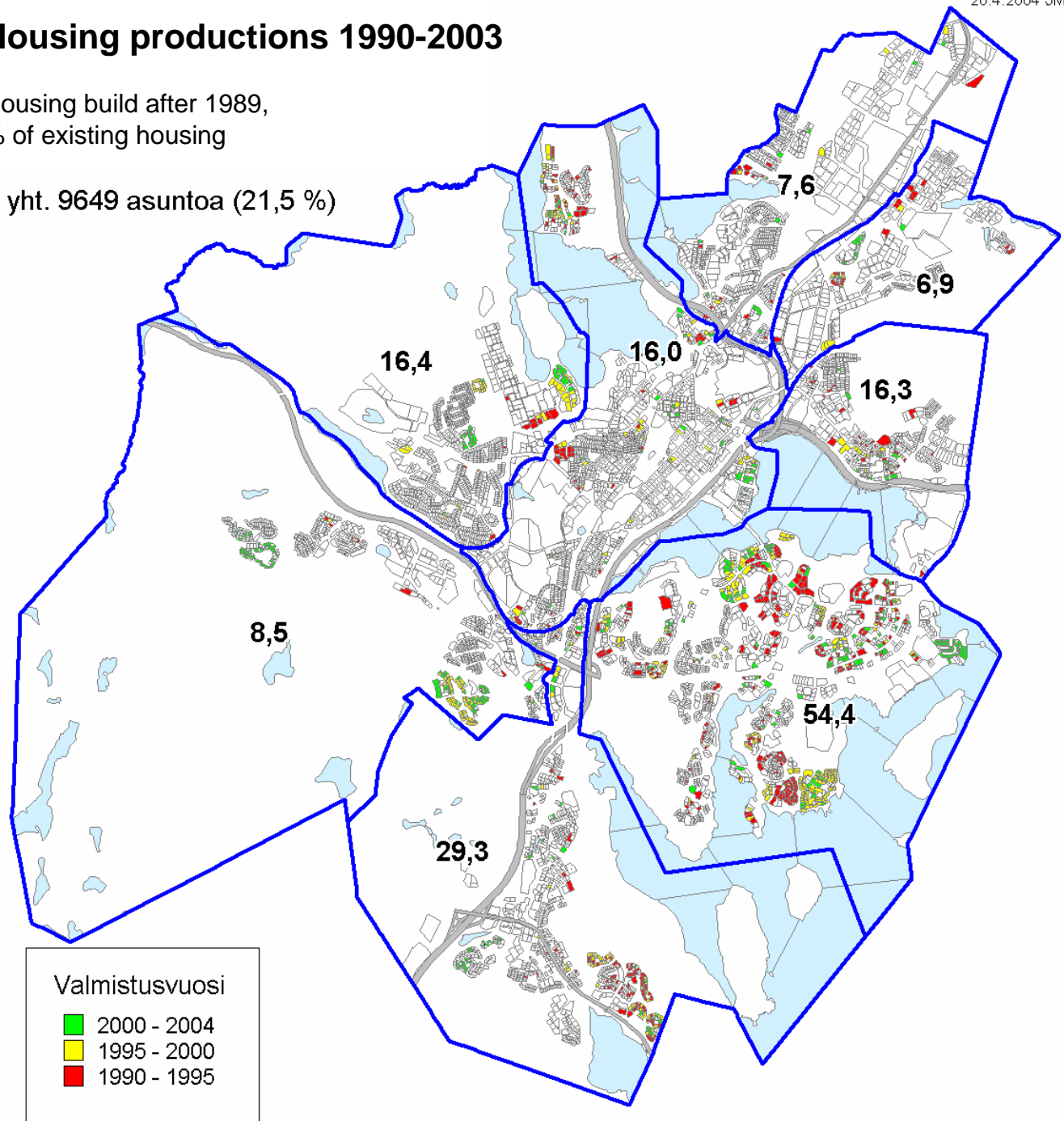
Jyväskylä has 137,69 km²
lakes 31.79 km²
land 105,9 km²



Housing productions 1990-2003

Housing build after 1989,
% of existing housing

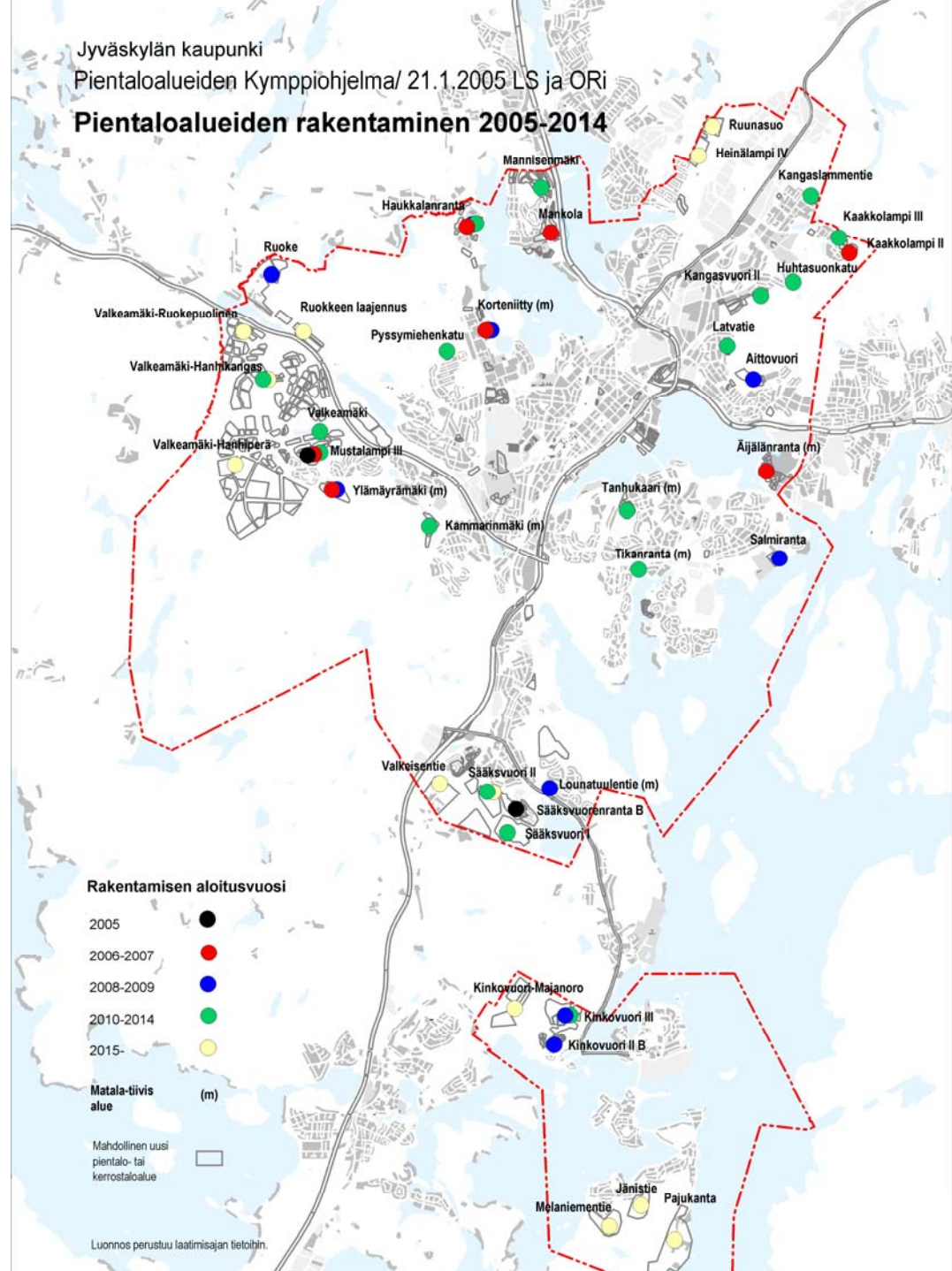
yht. 9649 asuntoa (21,5 %)



The Land Use Implementation Program

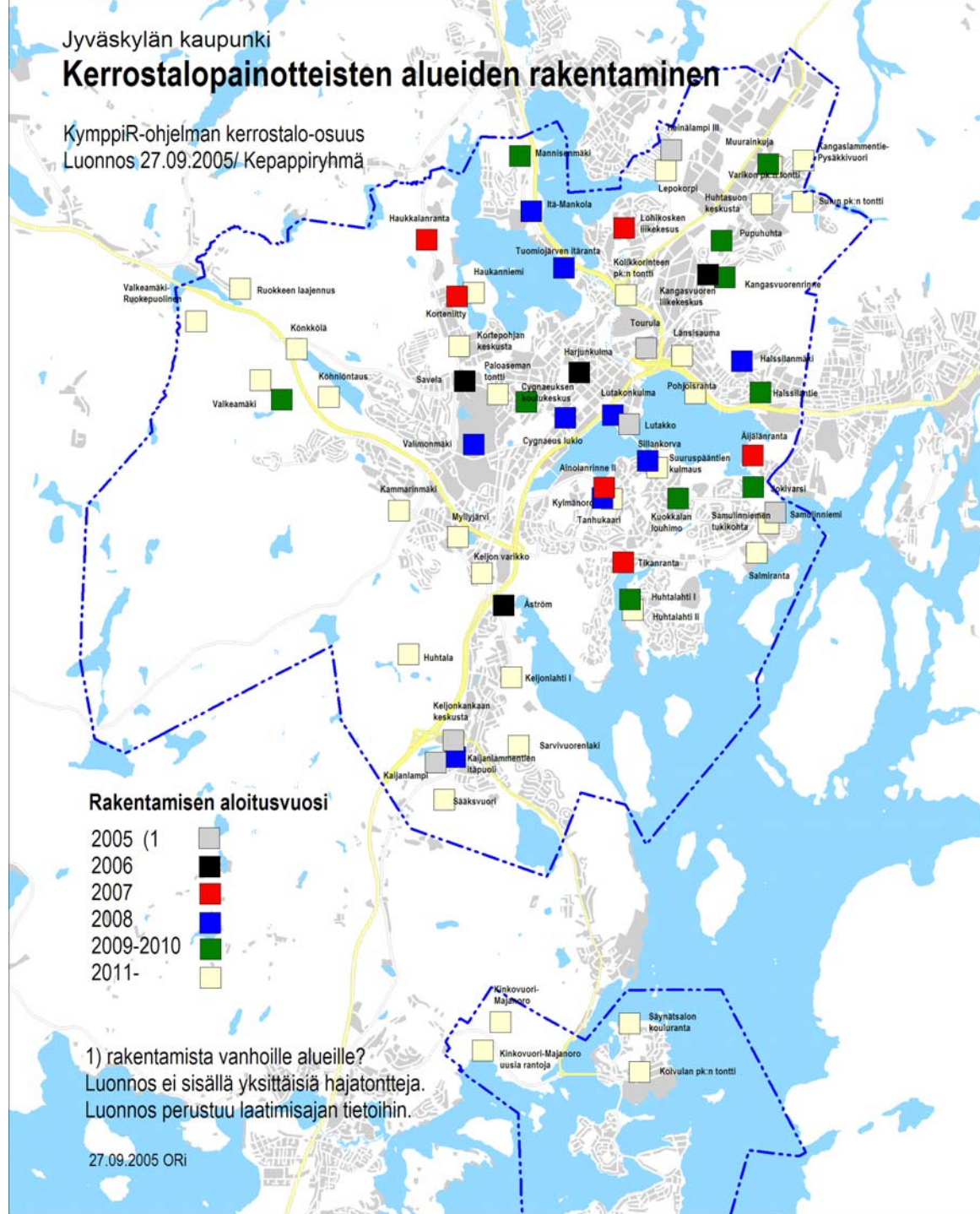
Single-family housing,
detached and semi-detached
houses

building 2005-2014



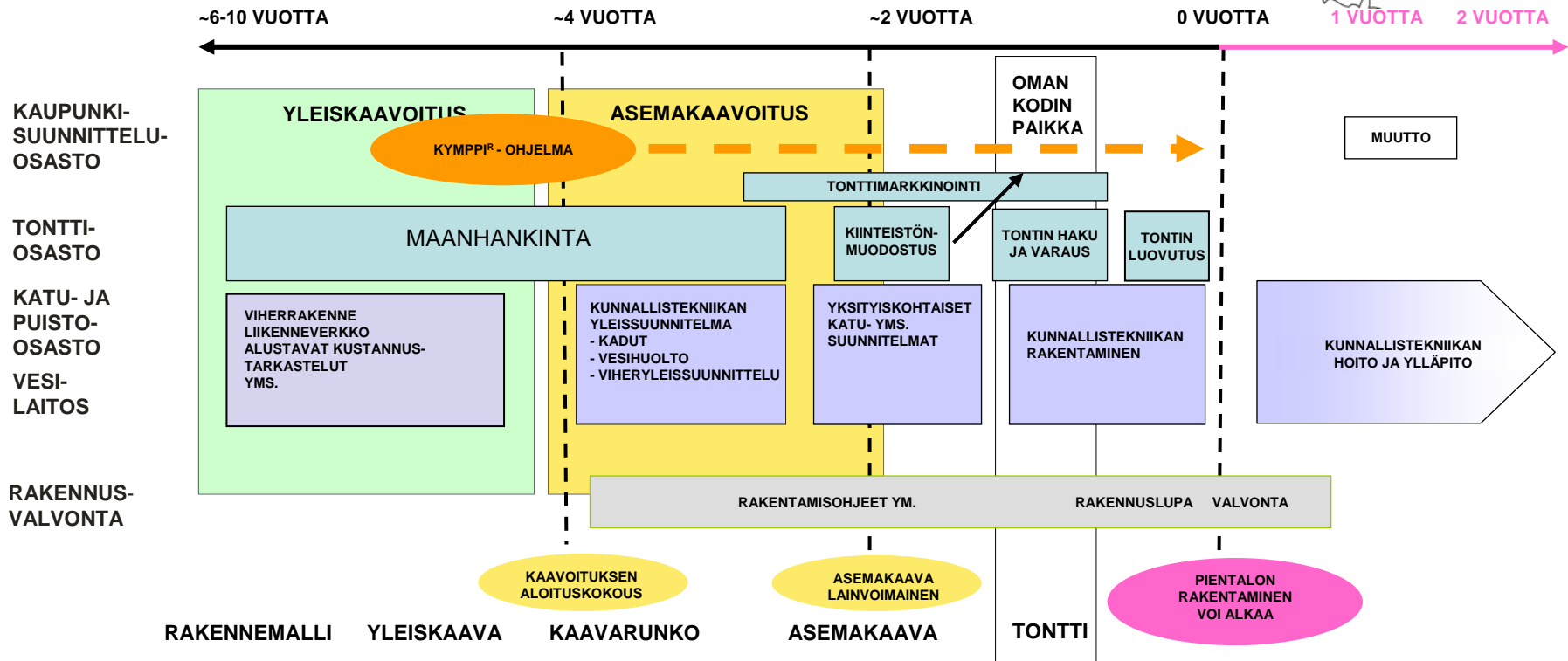
The Land Use Implementation Program

Apartment buildings housing areas building 2005-2014



Pientalorakentamisen mahdollistaminen Yhdyskuntatoimessa

Kaupunkisuunnitteluosasto / LS ja LR



Land Use Implementation Program

Benefits :

- managing the entity
- defining options
- ground to planning program and infrastructural investment program
- a channel for debate and information
- visualization
- improving customer service
- basis for implementing local services
-